

Procedure:**Installation of ATP 3" Stainless Downpipe for Jetta/Golf/GTI 4, 1.8T**

Warning: The 3" downpipe assembly is available with catless and catted rear sections. The catless rear pipe is designed to be used in off-road racing applications only and should never be used on a public highway.

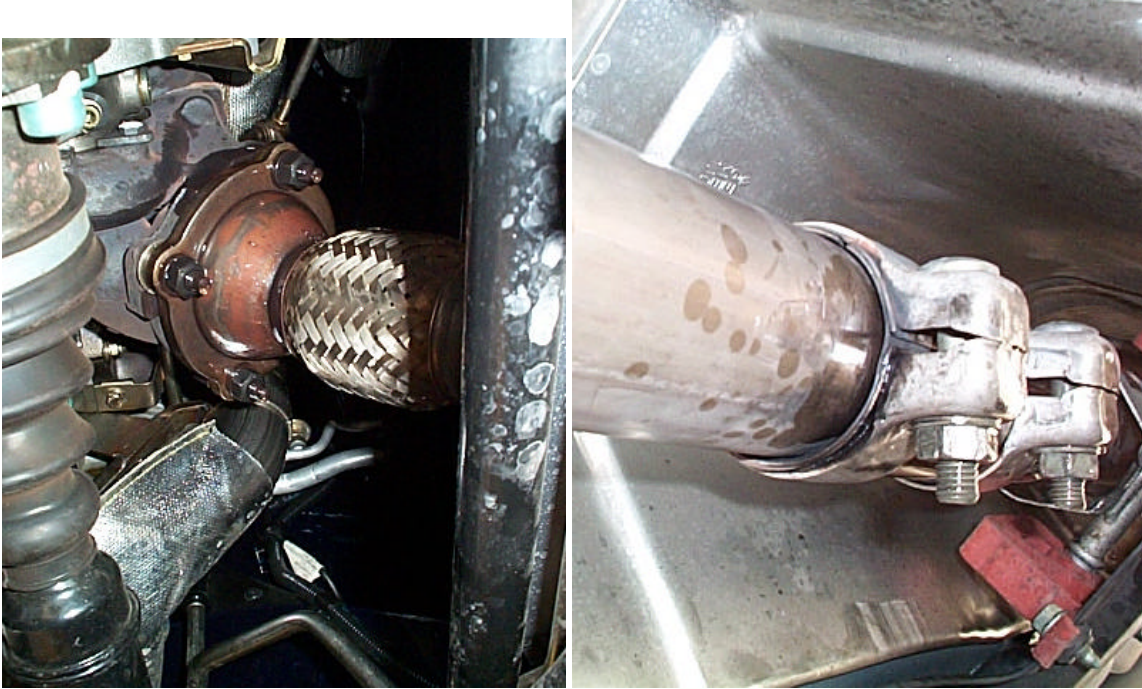
**Parts Checklist:**

Provided

- Downpipe assembly: Turbo exit pipe and rear pipe
- Gasket – Turbo exit (4 bolt)
- Gasket – Front pipe to rear pipe (3 bolt)
- Bolts – 3/8" x 1.5" (Qty: 3)
- Nuts – 3/8" (Qty: 3)
- Washers – 3/8" (Qty: 3)

Tools Checklist:

- Liquid Wrench – Spray Lubricant
- 17 mm combination wrench
- 22 mm combination wrench
- 10 mm socket and ratchet driver
- 15 mm combination wrench
- 15 mm socket and ratchet driver
- Large Flathead screwdriver

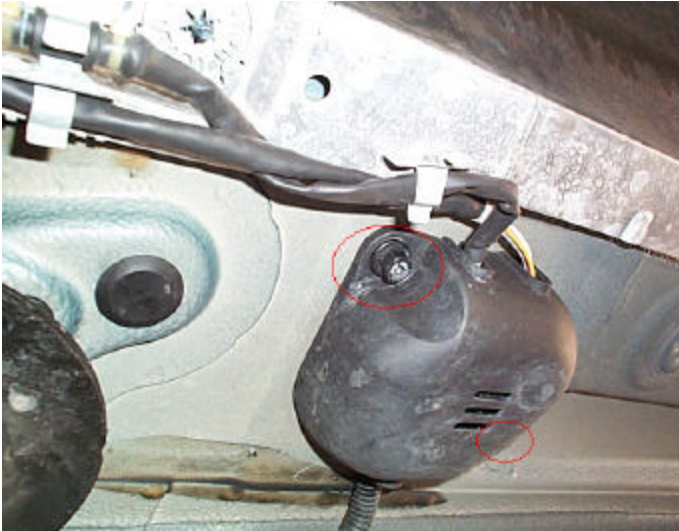
Instructions:**Remove stock downpipe assembly**

1. Spray Liquid Wrench on all nuts and bolts prior to attempt to removal in order to prevent stripping or damaging of parts. Concentrate on the following:

- 4 nuts/studs attaching downpipe to turbo
- 2 nuts/bolts on band clamp attaching end of cat to exhaust pipe

Allow minimum of 10 – 15 minutes for lubricant to take effect

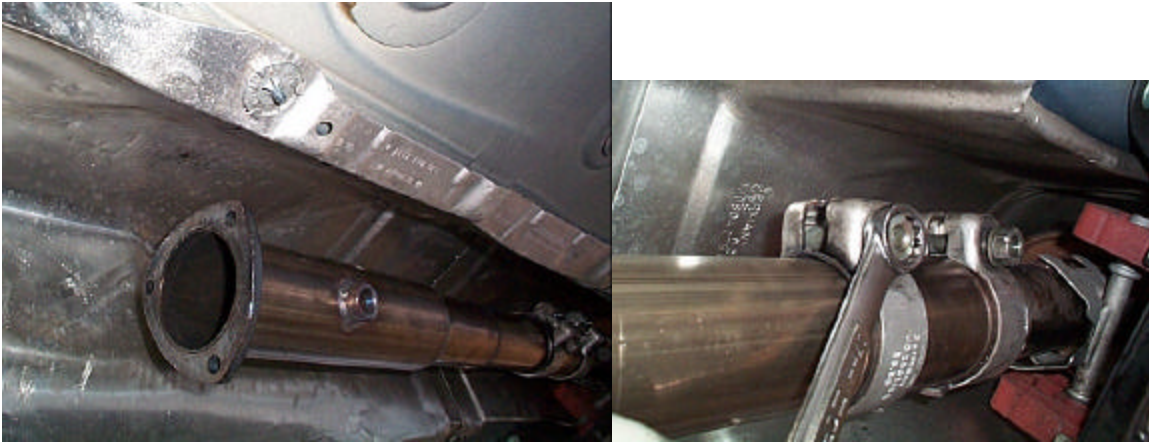
2. Using 17 mm wrench, loosen the (2) 17mm nuts holding band clamp to end of cat and exhaust pipe:
 - Mark the rotation of the bolt so that the clamp can be re-installed in the same position
 - Loosen both nuts all the way and use large flathead screwdriver to spread the clamp to loosen from pipe



3. Unplug both O2 sensors from harness:
 - Use 10mm socket and ratchet to remove black cover from under car frame.
 - Unplug both O2 sensor plugs from harness and free wires from clips
4. Using 17 mm wrench, loosen and remove the (4) 17mm nuts holding the downpipe to the bottom of turbo.
5. Carefully slide the downpipe assembly down and away from the turbo.
 - Slide the band clamp at the end of the pipe into the downpipe, away from the exhaust to make room
 - Remove the stockpipe assembly (along with the O2 sensors and band clamp) from the car.



6. Using 22mm wrench, carefully remove O2 sensors from the stock downpipe. Mark the front O2 sensor (larger wire plug) vs. the rear O2 sensor (smaller wire plug) for appropriate reinstall.

Install ATP downpipe assembly

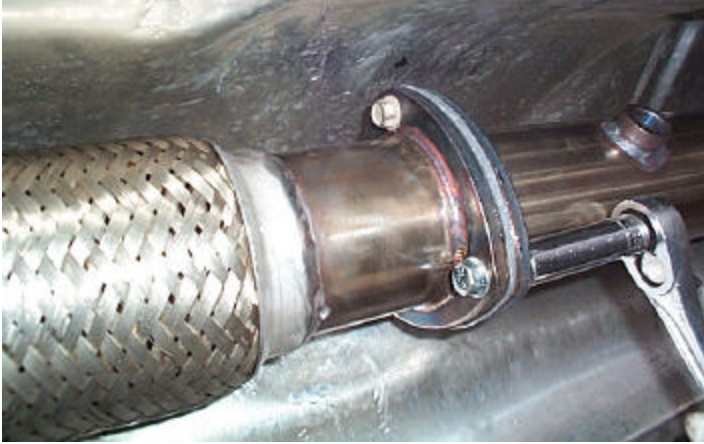
1. Install rear section of 3" downpipe first:
 - Slip end of the rear pipe into the band clamp (spread clamp with large flathead screwdriver). Tap on the pipe's flange to allow pipe to slip in if necessary. Be careful not to cause clamp to be out of round on the other end. Pipe must be inserted 2.5" into the clamp
 - Slip rear pipe and clamp onto the rear exhaust and allow to sit loosely.
2. Install top section of 3" downpipe:
 - Remove stock 4 bolt gasket and replace with new gasket provided.



- Place top of downpipe into 4 bolt circle on turbo and reinstall the (4) 17mm washers and nuts.



- Tighten these bolts into place and torque per specification.
- Join the front to rear pipe via the 3 bolt flanges using GASKET and 3/8" bolts and nuts.



- Tighten the (2) 17mm nuts/bolts on exhaust band clamp. Ensure proper seating of the exhaust prior to tightening down.
- Re-install the O2 sensors (or originally positioned – front vs. rear) in the ports provided on the 3" downpipe.
- Plug O2 sensor back into harness.
- Re-install black O2 sensor plug cover.
- Carefully reroute O2 sensor wiring onto stock clips on heatshield. Do not allow the wiring to touch any of the piping work to avoid melting of wires.

End of Install